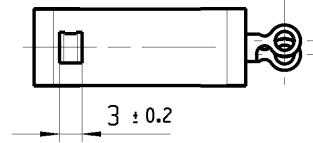
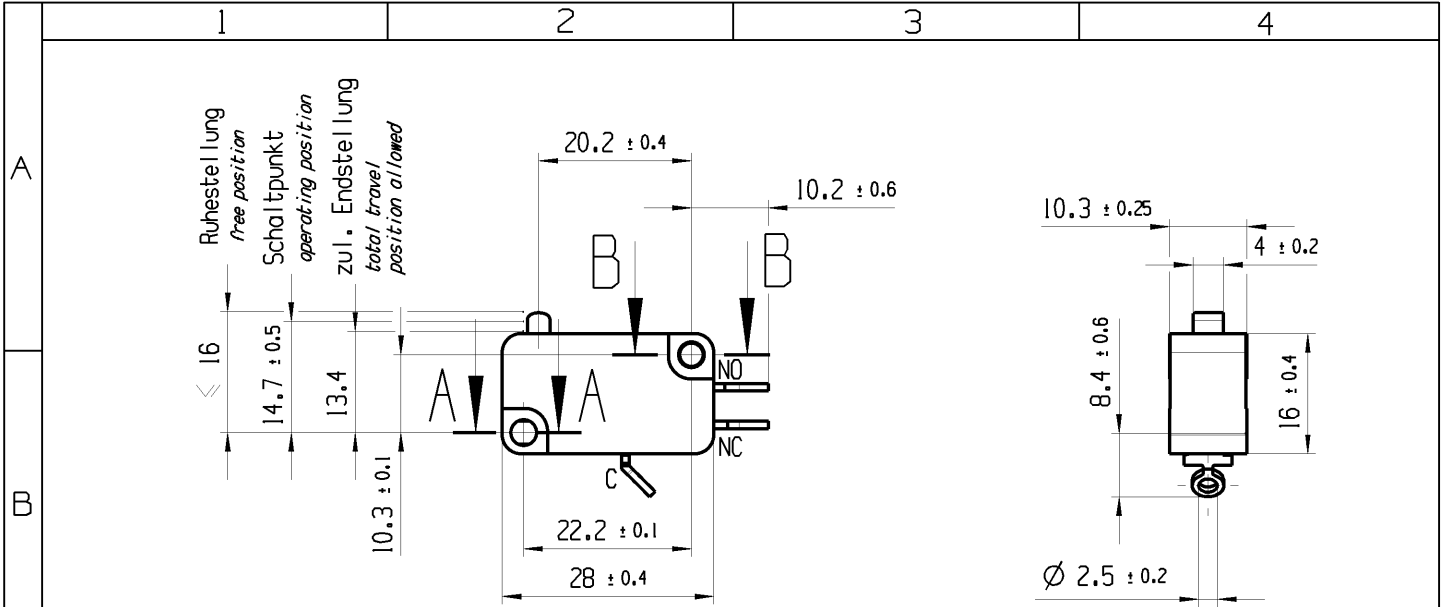


THIS DRAWING IS THE EXCLUSIVE PROPERTY OF MARQUARDT. WITHOUT THEIR CONSENT IT MAY NOT BE REPRODUCED OR GIVEN TO THIRD PARTIES.

CONFIDENTIAL

VERTRAULICH

Alle Rechte bei Marquardt, auch fuer den Fall von Schutzrechtsanmeldungen. Jede Verueugungsbezugnis, wie Kopier- und Weitergaberecht, bei uns.



A-A  
2:1

B-B  
2:1

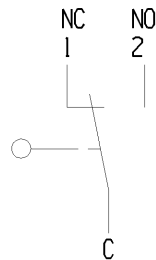
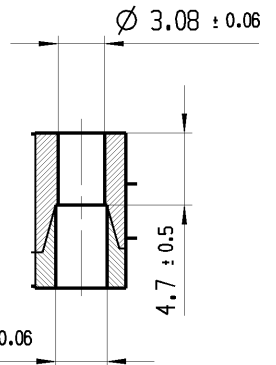
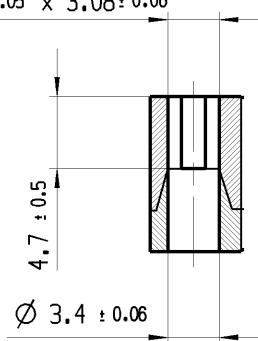
Aufschrift  
marking

1004 µ T100  
6(2.5) /250~50E3 05

4A 125V AC 1/6HP  
4A 250V AC 1/6HP

R5

3.35 ± 0.05 x 3.08 ± 0.06



Wechsler 1-polig  
single pole changeover

Schalt-Betaetigungskraft 0.2 bis 0.6 N  
actuating force 0.2 up to 0.6 N

Differenzweg ≤ 0.3 mm  
movement differential

Herstellort / -jahr / -woche  
date code of manufacture:  
place / year / week

fuer Form und Lage FOR SHAPE AND LOC.	⊙ =	Allgemeintoleranzen UNTOLERANCED DIMENSIONS				Pause COPY	Blatt SHEET 01	TYP K	Zeichn./DRAWING NO. 10040402	Index 9
	fuer Winkel FOR ANGLE ± 2	PROJEKTION	Abmasse und Nennmassbereiche Angaben in mm	Laenge LENGTH	Radial RADII					
		ALL DIMENSIONS ARE IN MILLIMETRES	0-6 ± 0.1	± 0.2				SCHNAPPSCHALTER		
			>6-15 ± 0.15	± 0.3				snap action switch		
			>15-30 ± 0.2	± 0.5						
			>30-70 ± 0.3							
			>70-120 ± 0.4	± 10%						
			>120 ± 0.8							
g	85442	02.10.13	BRC			CAD: NX V6.0				
r	29115	17.03.00	PFU			gez./DRAWN BY 12.06.13 BCY				
e	21670	11.08.92	BLE			gepr./CHECKED BY				
Ausg. ISSUE	Aenderung REVISION	gez. DRAWN BY		Ausg. ISSUE	Aenderung REVISION	gez. DRAWN BY	Ersatz fuer/REPLACEMENT OF Zg.gl.Nr.v.17.03.2000	 MARQUARDT		