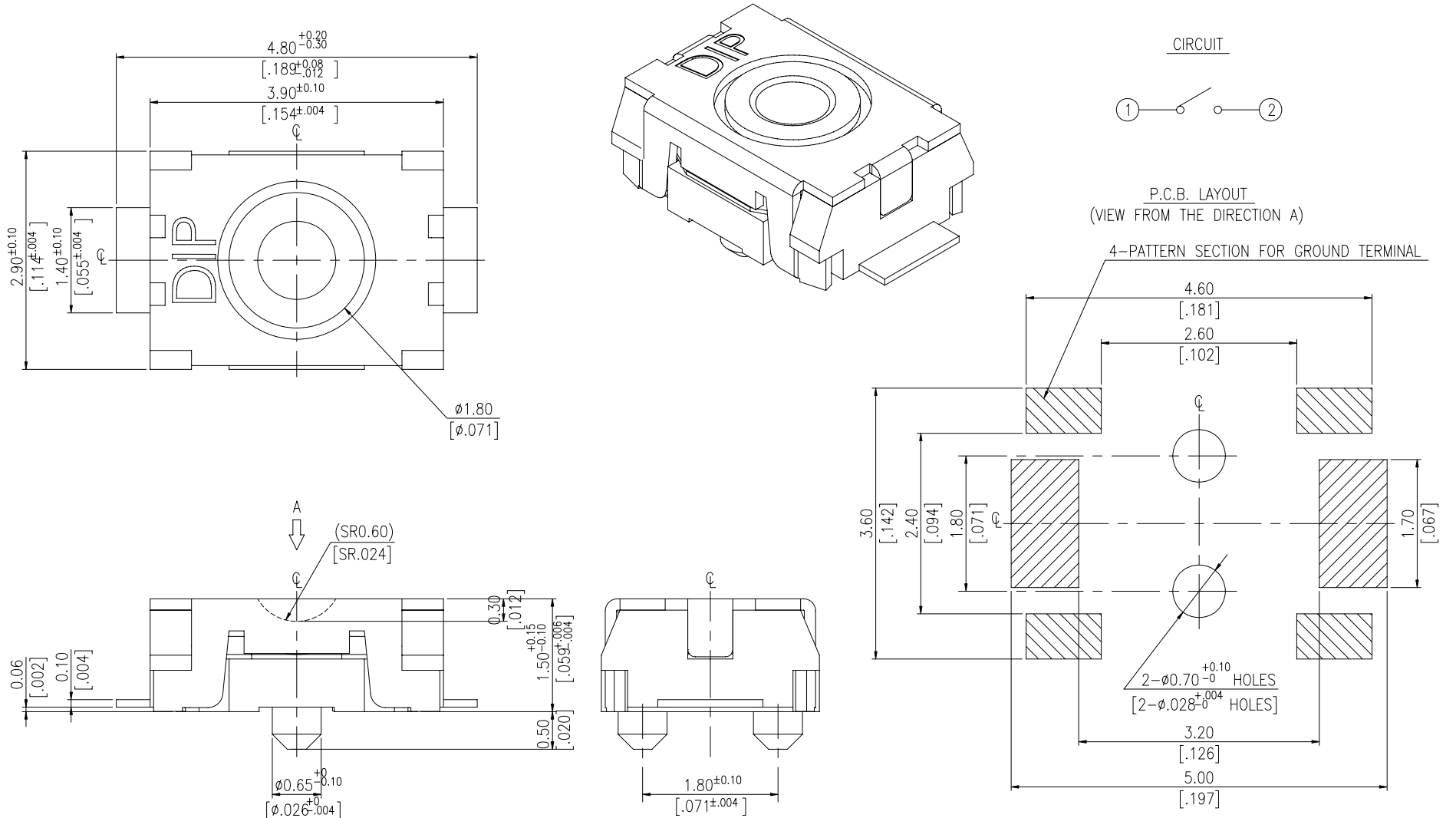


MPT SERIES



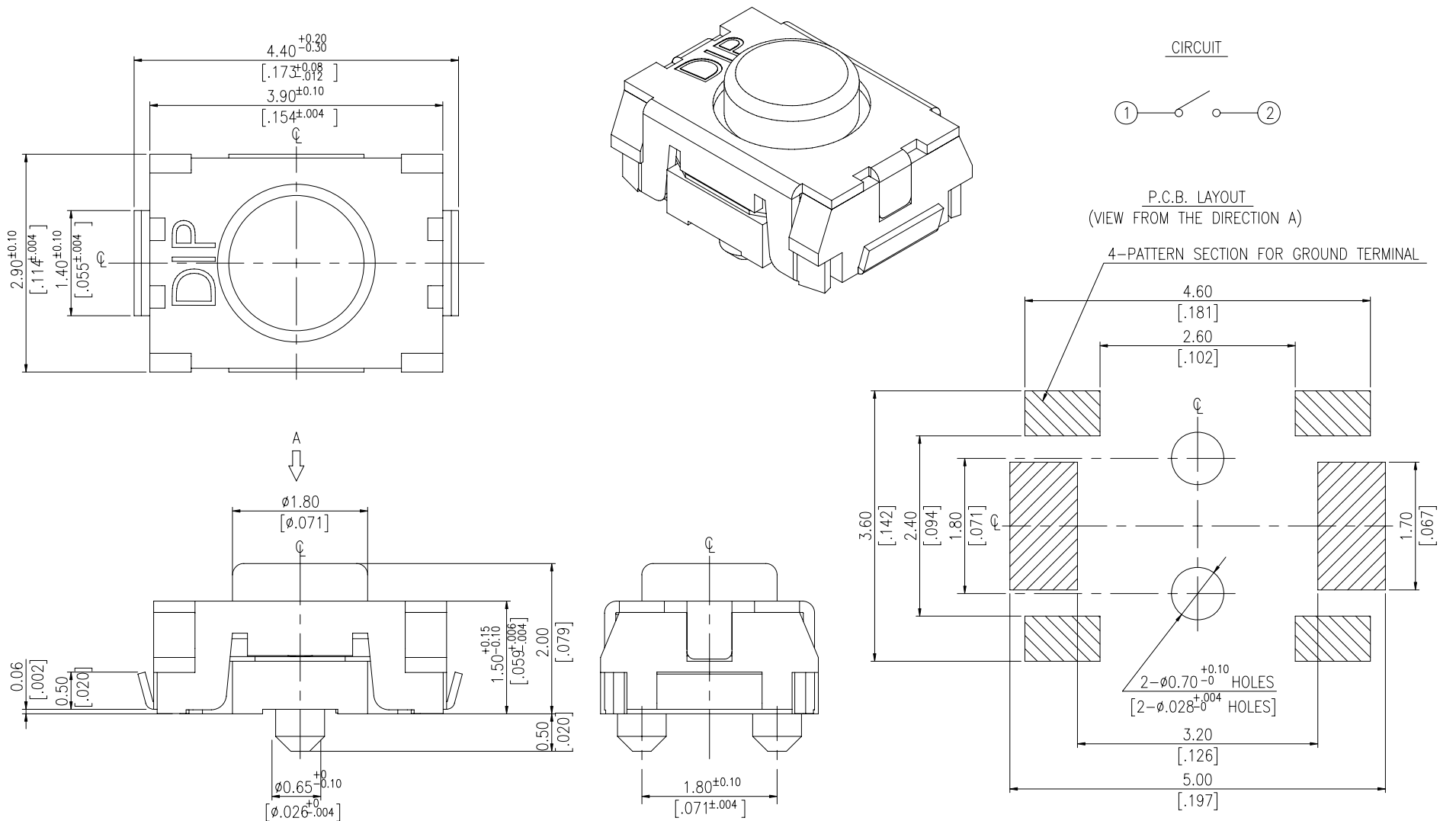
**DIMENSIONS**

**MPTCFGP1**



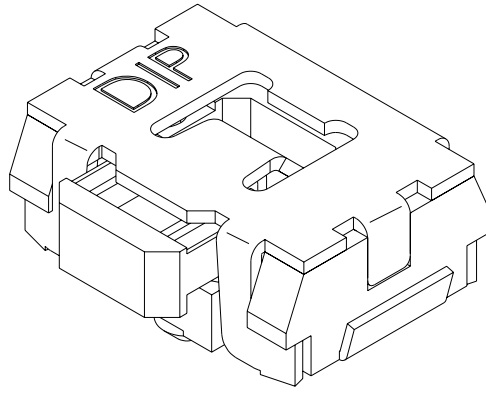
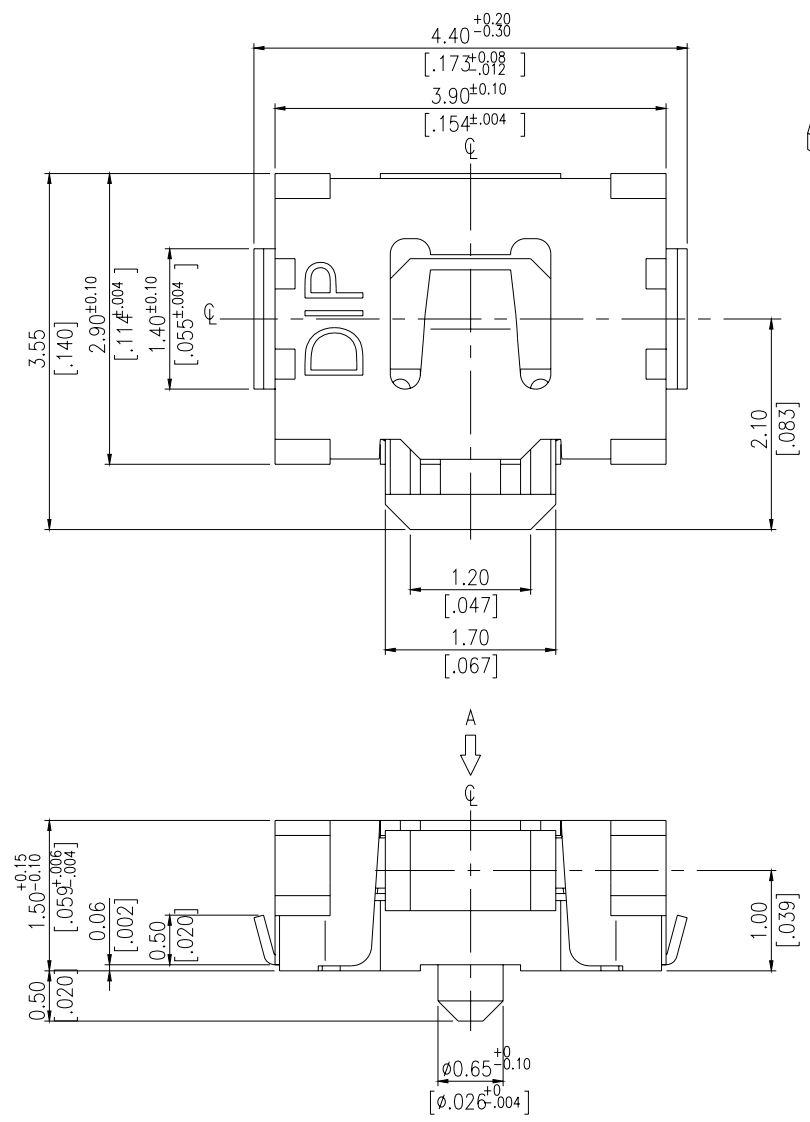
General Tolerance : ±0.2mm

**MPTCLGP2**

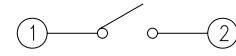


General Tolerance : ±0.2mm

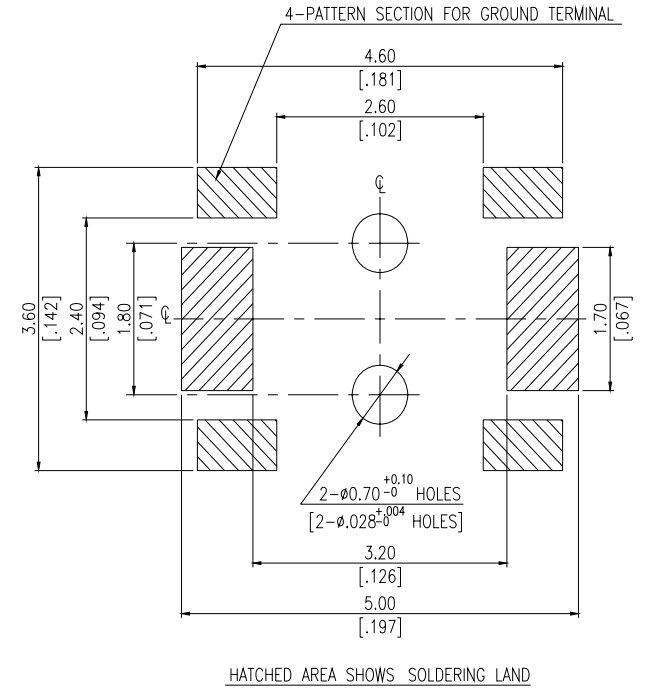
**MPTCLG**



CIRCUIT

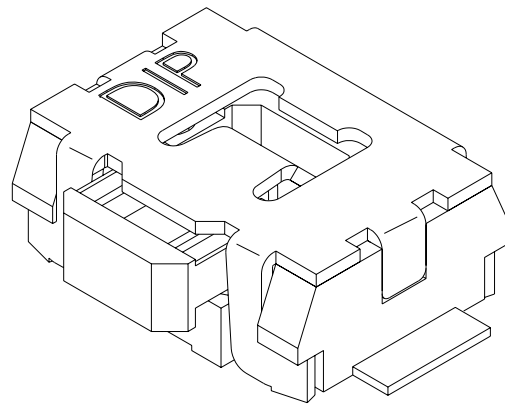
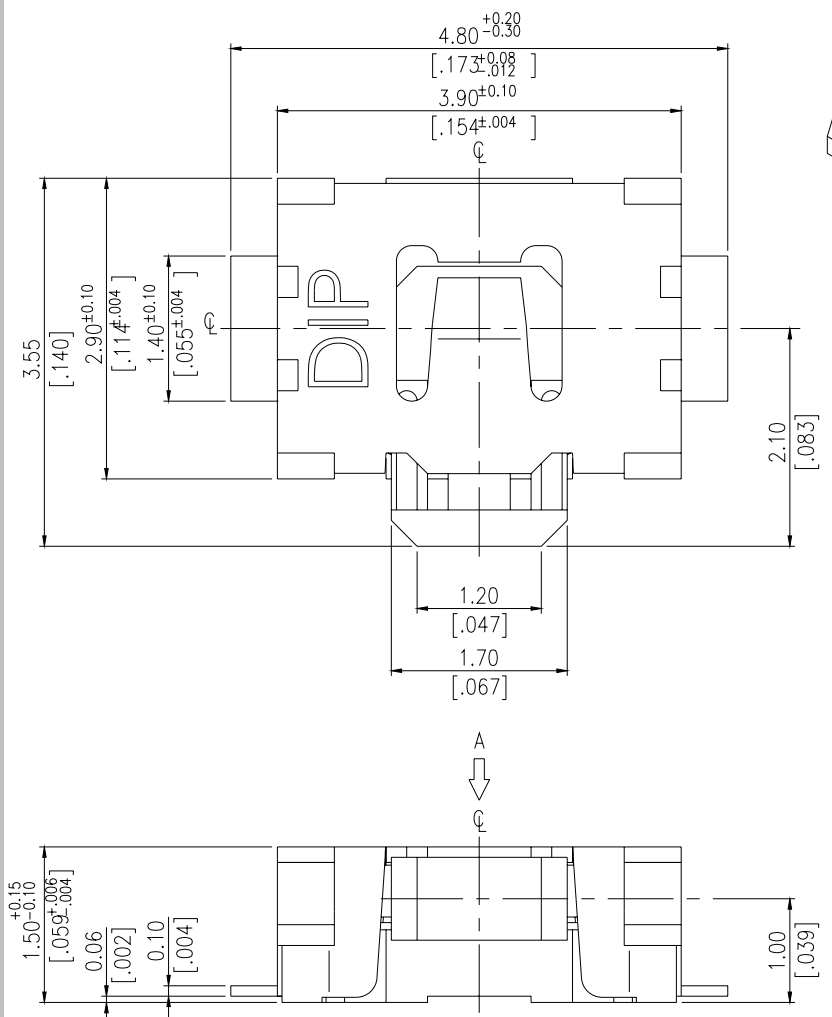


P.C.B. LAYOUT  
(VIEW FROM THE DIRECTION A)

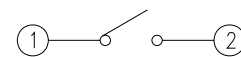


General Tolerance :  $\pm 0.2\text{mm}$

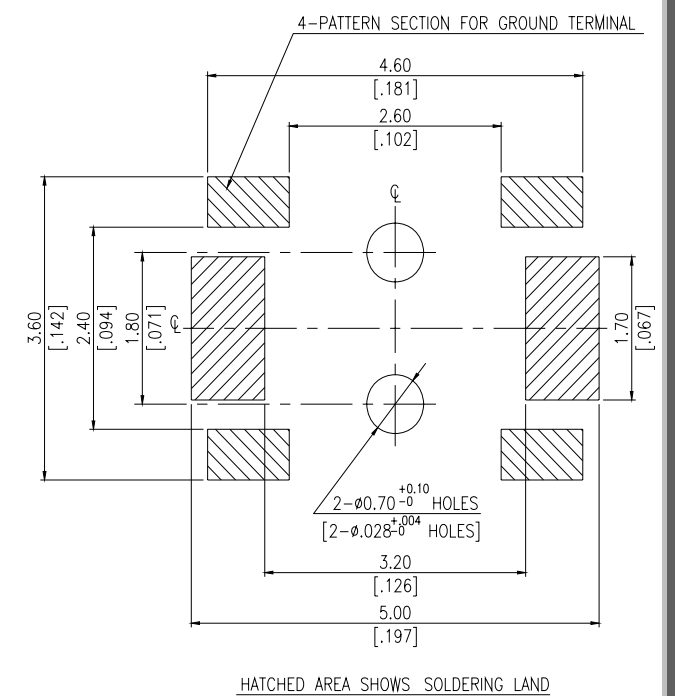
**MPTCFG**



CIRCUIT

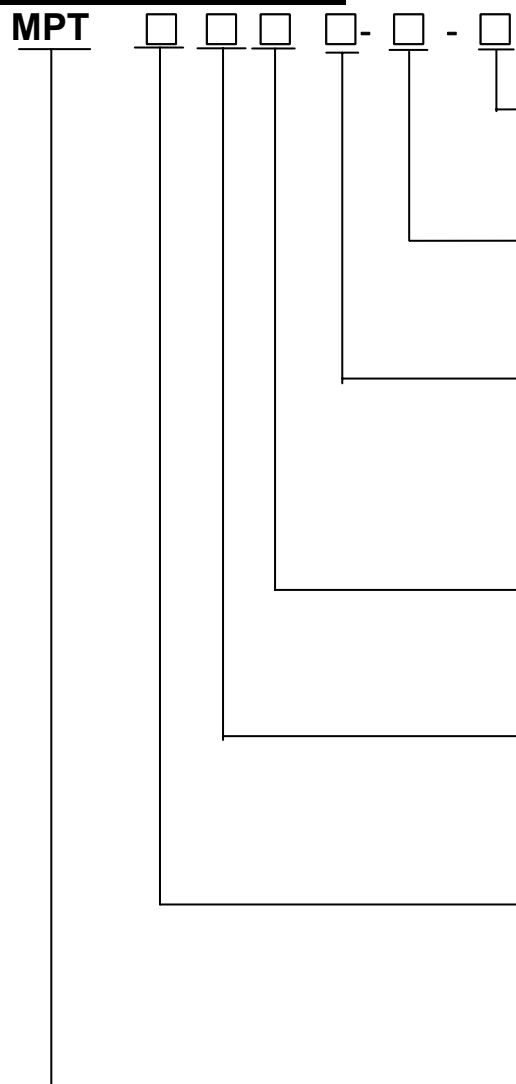


P.C.B. LAYOUT  
(VIEW FROM THE DIRECTION A)



General Tolerance :  $\pm 0.2\text{mm}$

## HOW TO ORDER



**Package Style:**  
T/R=Tape & Reel

**Soldering:**  
V=Lead Free Solderable

**Stem Height for Vertical Push Type**  
□=Side Push  
P1=1.5mm  
P2=2.0mm

**G=Ground Terminal**  
□=Without Ground Terminal

**Terminal Type:**  
F=With Flat Terminal  
L= With Bending Terminal

**Pilot:**  
□= Without Pilot  
C = With Pilot

Miniature side/ Vertical Push Switch

## SPECIFICATION

### △MECHANICAL

Operation Force: 160 ± 50gf Vertical Push  
220 ± 65gf Side push

Stroke: 0.2 +0.10 / - 0.05 mm side push  
0.13 +0.10/-0.05 mm Vertical push

Operation Temperature: -25°C to + 70°C

Storage Temperature: -30°C to +80°C

### △ELECTRICAL

Electrical Life: 100,000 cycles (Side push)

Electrical Life: 200,000 cycles (Vertical push)

Rating:50mA , 12VDC

Contact Resistance: 100mΩ max.

Insulation Resistance: 100MΩ min. at 100VDC

Dielectric Strength: 100VAC/1 minute

Contact Arrangement: 1 pole 1 throw

## MATERIAL

△COVER: Stainless steel

△BASE: LCP High-temp thermoplastic  
Color: White

△STEM: LCP High-temp thermoplastic  
Color: Black

△CONTACT DISC: Stainless with silver cladding

△TERMINAL: Brass with silver plated

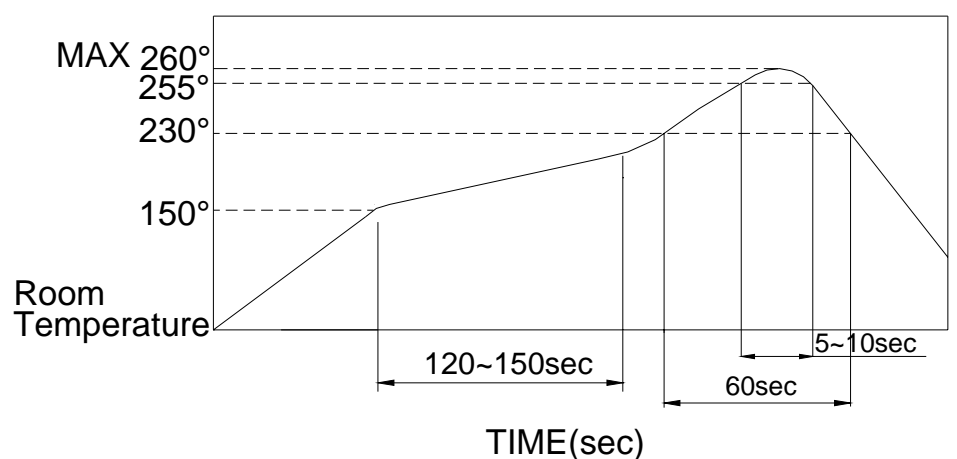
△TAPE: Teflon

## SOLDERING PROCESS

△HAND SOLDERING : Use a soldering iron of 30 watts, controlled at 350°C approximately max 5 seconds while applying.

△REFLOW SOLDERING: When applying reflow soldering, the peak temperature or the reflow oven should be set to 260°C max.

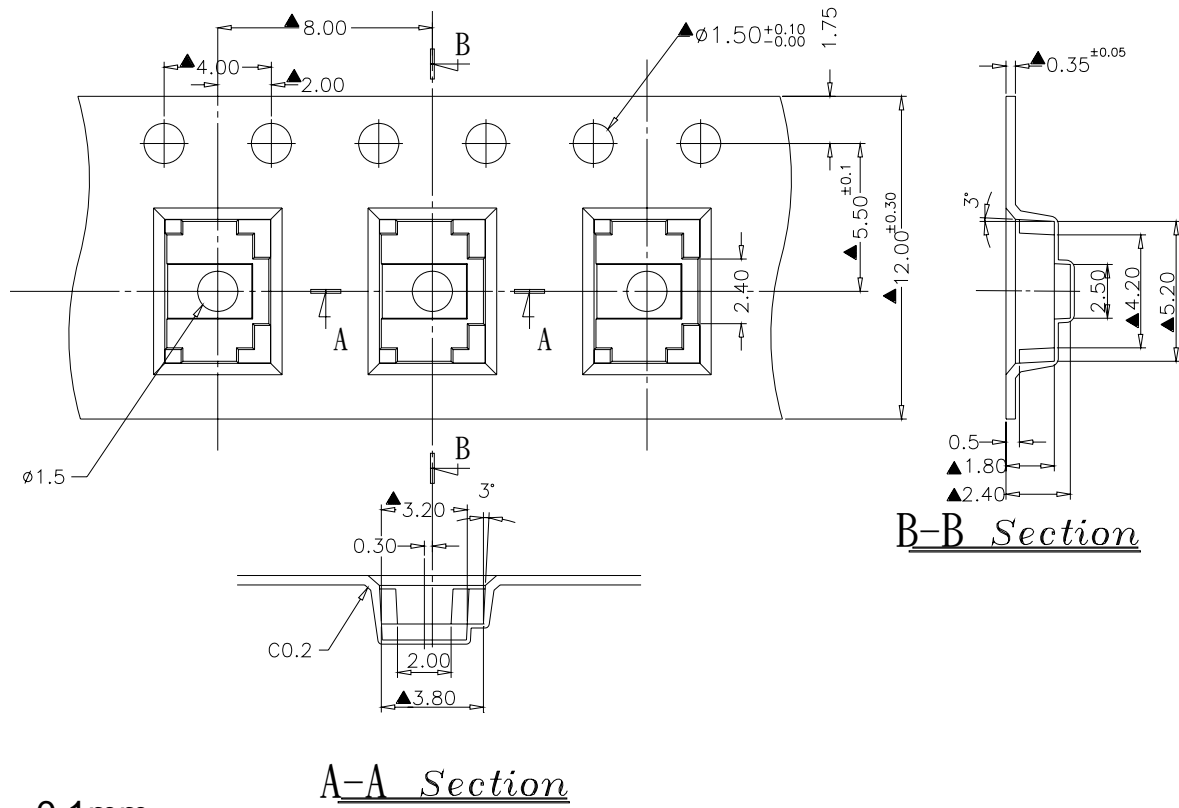
### △Reflow Temperature Profile:



# PACKING

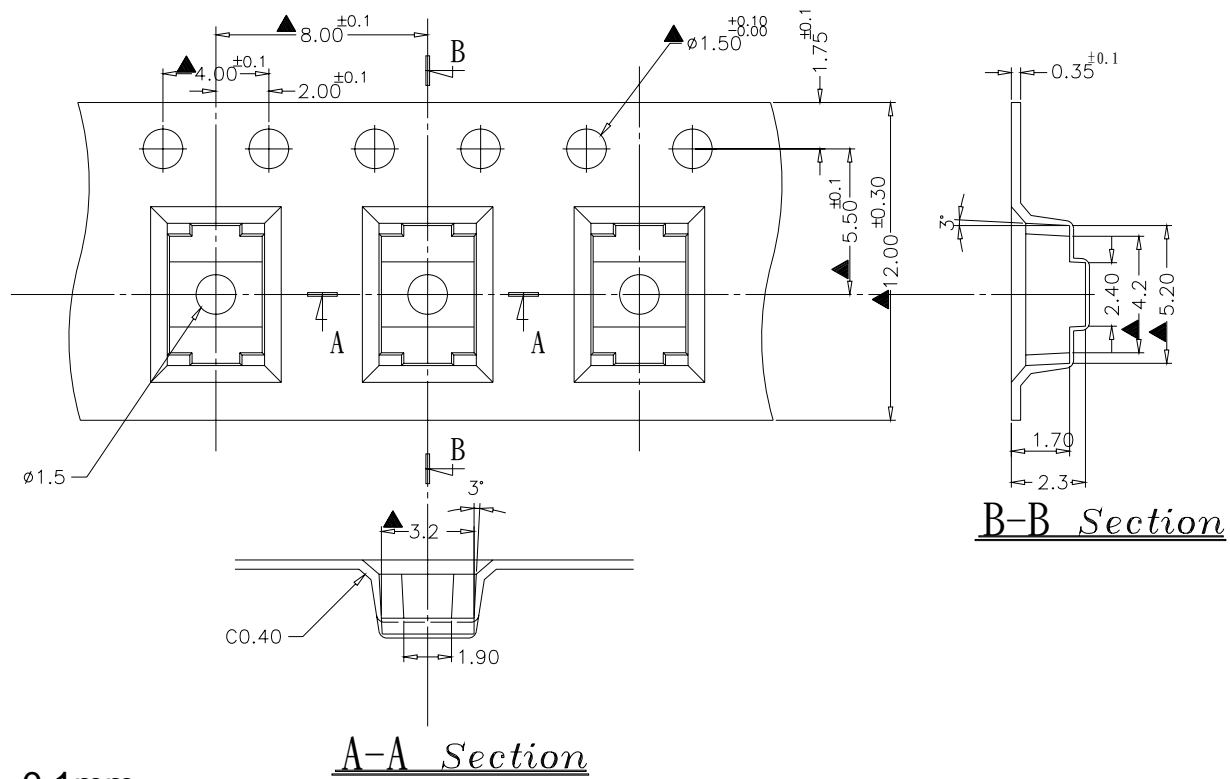
Part Number	Number Per Reel
MPT□FG	3500
MPT□LG	3500
MPT□F□P1	2000
MPT□L□P2	2000

## MPT REEL



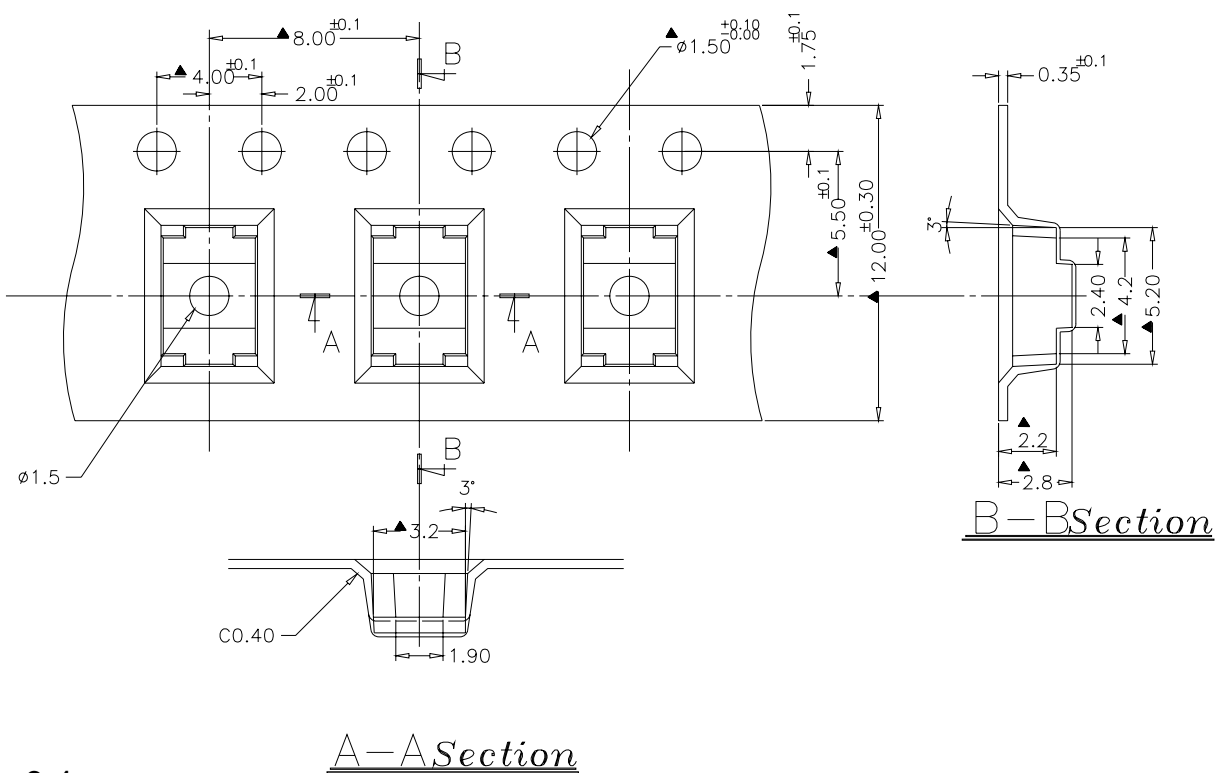
General Tolerance :  $\pm 0.1\text{mm}$

## MPT□F□P1 REEL



General Tolerance :  $\pm 0.1\text{mm}$

## MPT□P□P2 REEL



General Tolerance :  $\pm 0.1\text{mm}$